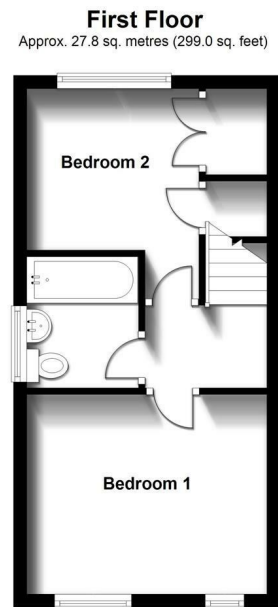
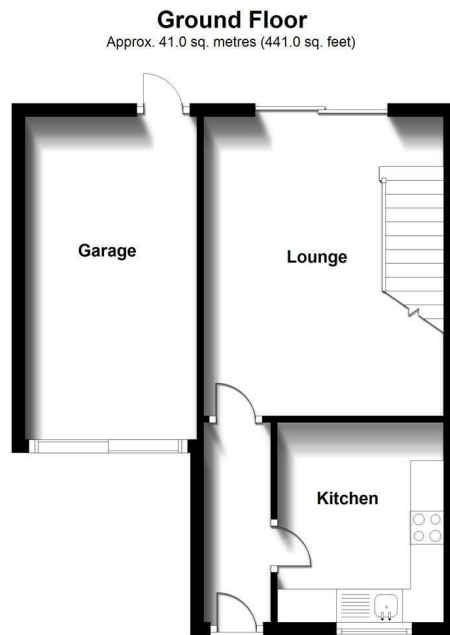


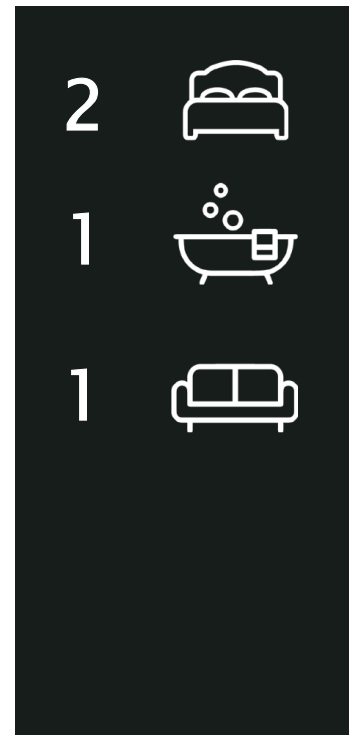
A two-story brick house with a dark brown tiled roof. The front facade features a central entrance door with a small gabled porch supported by wooden brackets. To the left of the door is a large wooden garage door. To the right of the door is a window with a decorative arched brick surround. The house is built of red and brown bricks. A gravel driveway leads to the garage. A black car is partially visible on the left. The sky is blue with some clouds. Bare trees are visible in the background.

EDEN MIDCALF
— SALES & LETTINGS —

£249,950
Hunts Rise
Worcestershire, DY12 1HR



Total area: approx. 68.8 sq. metres (740.1 sq. feet)



Energy Efficiency Rating		
	Current	Potential
Very energy efficient - lower running costs		
(92 plus) A		
(81-91) B		85
(69-80) C		
(55-68) D	68	
(39-54) E		
(21-38) F		
(1-20) G		
Not energy efficient - higher running costs		
England & Wales		
EU Directive 2002/91/EC		



Agents Note: Whilst every care has been taken to prepare these particulars, they are for guidance purposes only. All measurements are approximate and are for general guidance purposes only and whilst every care has been taken to ensure their accuracy, they should not be relied upon and potential buyers/tenants are advised to recheck

EDEN MIDCALF
— SALES & LETTINGS —

5 Load Street
Bewdley
DY12 2AF

01299 402392
wyreforest@edenmidcalf.co.uk
<https://www.edenmidcalf.co.uk/>
us/